

# Superior Alcohol Monitoring

High-Tech Densitometry provides superior performance for measuring and controlling 190 and 200 Proof bringing more profit to the bottom line

- Most ethanol plants rely on “offline” or “post production” laboratory measurements to assess performance of alcohol proof control. Automating this process yields higher quality while saving money.
- The Anton-Paar Alcohol Monitor offers density accuracy of  $0.00005 \text{ g/cm}^3$  coupled with optimized software. Together this solution yields **proof accuracy of 0.01%**
- Measurement allows critical precision to control 190 proof by optimizing the rectifier recirculation providing exact and repeatable input to the molecular sieves
- Measurement after the mole sieve condenser and product cooler provides extremely precise output for 200 proof. High quality dehydration is achieved prior to storage avoiding all downstream processing problems associated with inconsistent water percentage content.

Improve the performance of your rectifier, molecular sieve and blending quality while achieving rapid ROI. Achieve ultimate product quality—exceed product specification...every time.

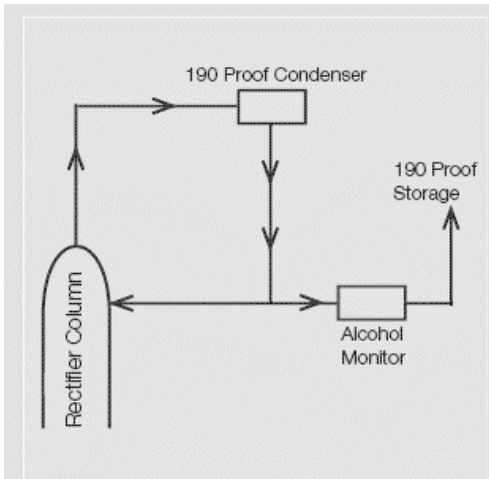


Fig. 1 Alcohol Monitor for 190 Proof at the rectifier column

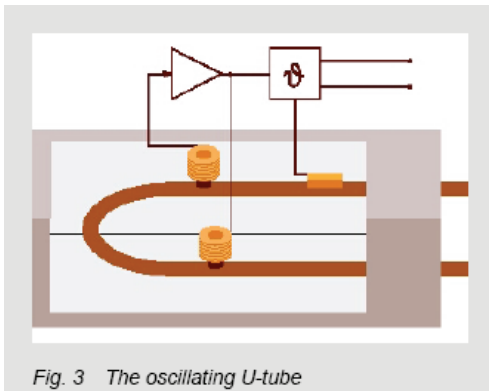


Fig. 3 The oscillating U-tube

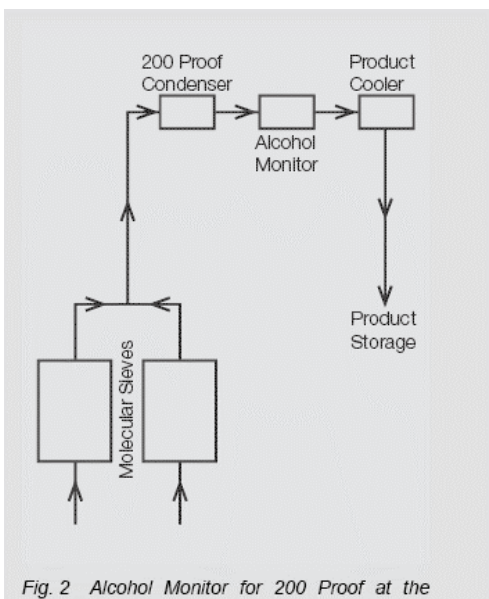


Fig. 2 Alcohol Monitor for 200 Proof at the